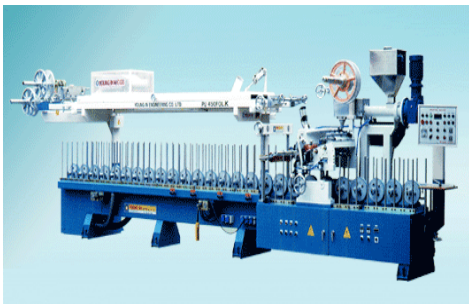
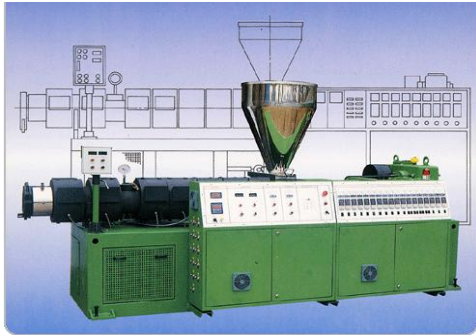


# 1. KUMYOUNG Co.,Ltd. HISTORY



# 2. FACILITY LIST



NO.	Facility	Capacity	Unit	EA
1	Twin parallel extrusion 130kw	92	Φ	1
2	Twin parallel extrusion	90	Φ	8
3	Twin parallel extrusion	70	Φ	2
4	Super mixer 225kw	1,600	l	1
5	Cooling & Blender 1.85kw	2,500	l	1
6	Super mixer 200kw	1,300	l	1
7	Cooling & Blender 1.85kw	2,500	l	1
8	Wrapping M/C	8	m	6
9	Material storage tank	10	ton	5
10	Material storage tank	10	ton	2
11	Sub Material storage tank	500	kg	11
12	Indicator	1,000	kg	2
13	Conveying System	50	ton	4
14	Compressors	50	hp	1
15	Compressors	50	hp	1
16	Freezer	50	R/T	2
17	Cooling Towers	125	R/T	1
18	Dust Collector	3	L/V	2
19	Duplex cutter	6	m	2
20	Diesel forklift	4	ton	1
21	Electric Forklift	2	ton	2
22	Cutter	Double-edged		2
23	Cutter	single-edged		2
24	Water, Electric equipment	2,046	kw	1
25	Printer			4
26	Vehicles	5	ton	1

# 3. Working Process



1. Compounding process



2. Extrusion Process

# 3. Working Process



3. Wrapping Process



4. Assembly and installation process

# 3. Working Process



5. Product Test Process



6. Door Assembly process

# 4. Quality Management



\*Windows testing machine

1. Tensile strength
2. Flexural strength
3. elongation percentage



\*Doors testing machine

1. Vertical load strength
2. Torsional strength
3. Impact strength
4. Opening repeatability



\*Colorimeter( color-difference meter)

1. Chrominance classification
2. Color matching

# 5. PVC WINDOW

## Contents

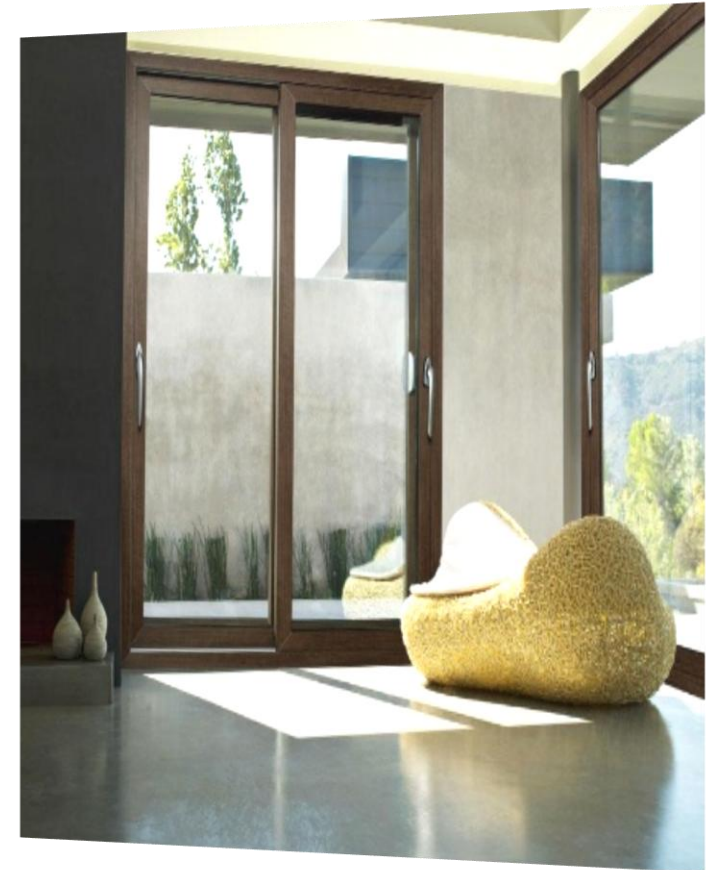
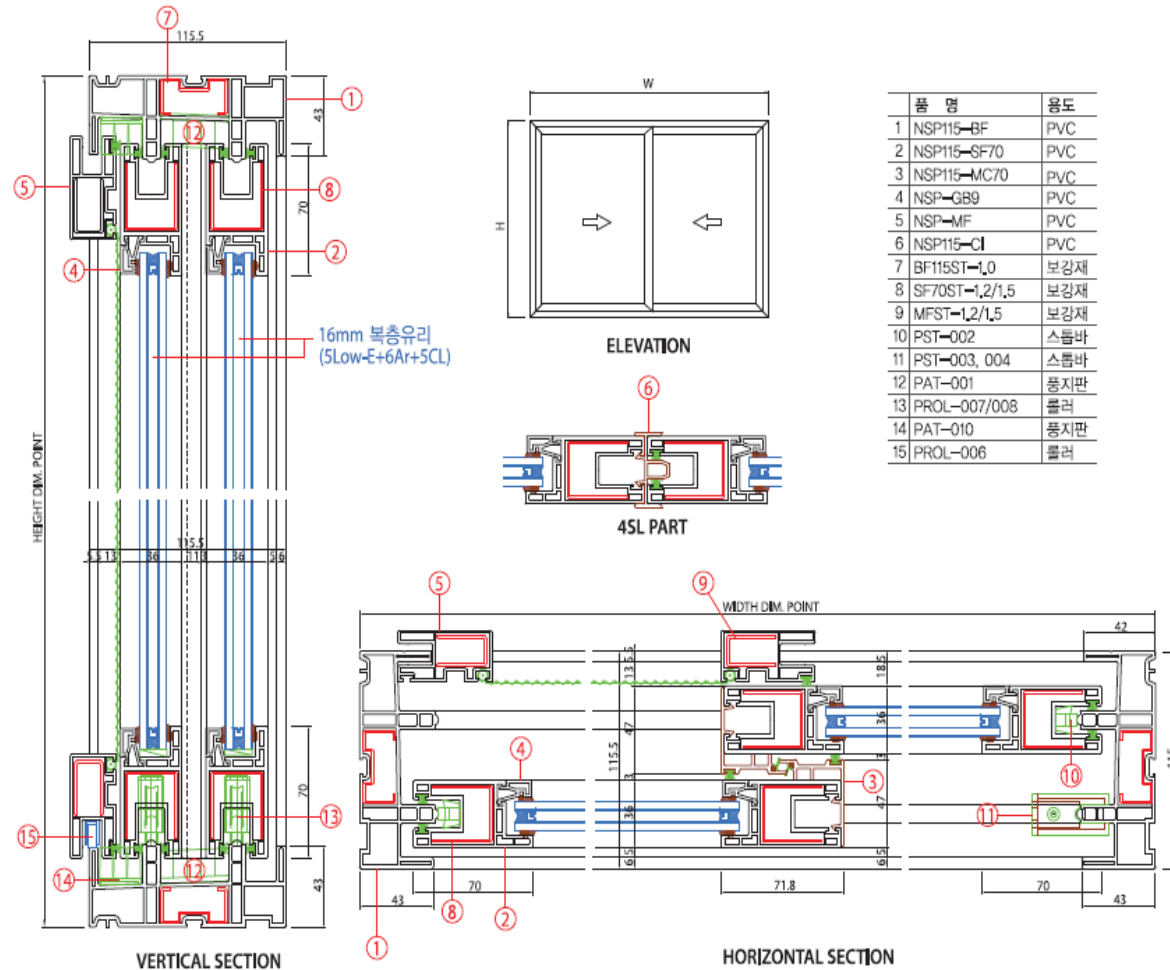
01. KYP115-70- P16
02. KYP115-70- SLIDING & FIX
03. KYP115R-70- SLIDING
04. KYP225-70- P16CA/P16CA
05. KYP225-70- P16CA/S5
06. KYP-BF225W-70- SLIDING
07. KYP225R-70-P16CR/P16CA
08. KYP225R-70-S5/S5
09. KYP230-70-SLIDING
10. KYP250-70-SLIDING
11. KYP115B-80-SLIDING
12. KYP250-P22CA/P22CA
13. KYP250-P16CA/P16CA
14. KYP250-S5/S5
15. KY-Roller and Stopper



# 1. KYP115-70- P16

## ▣ Sliding General Feature

- Structural stability
- Excellent durability
- Aesthetic effect

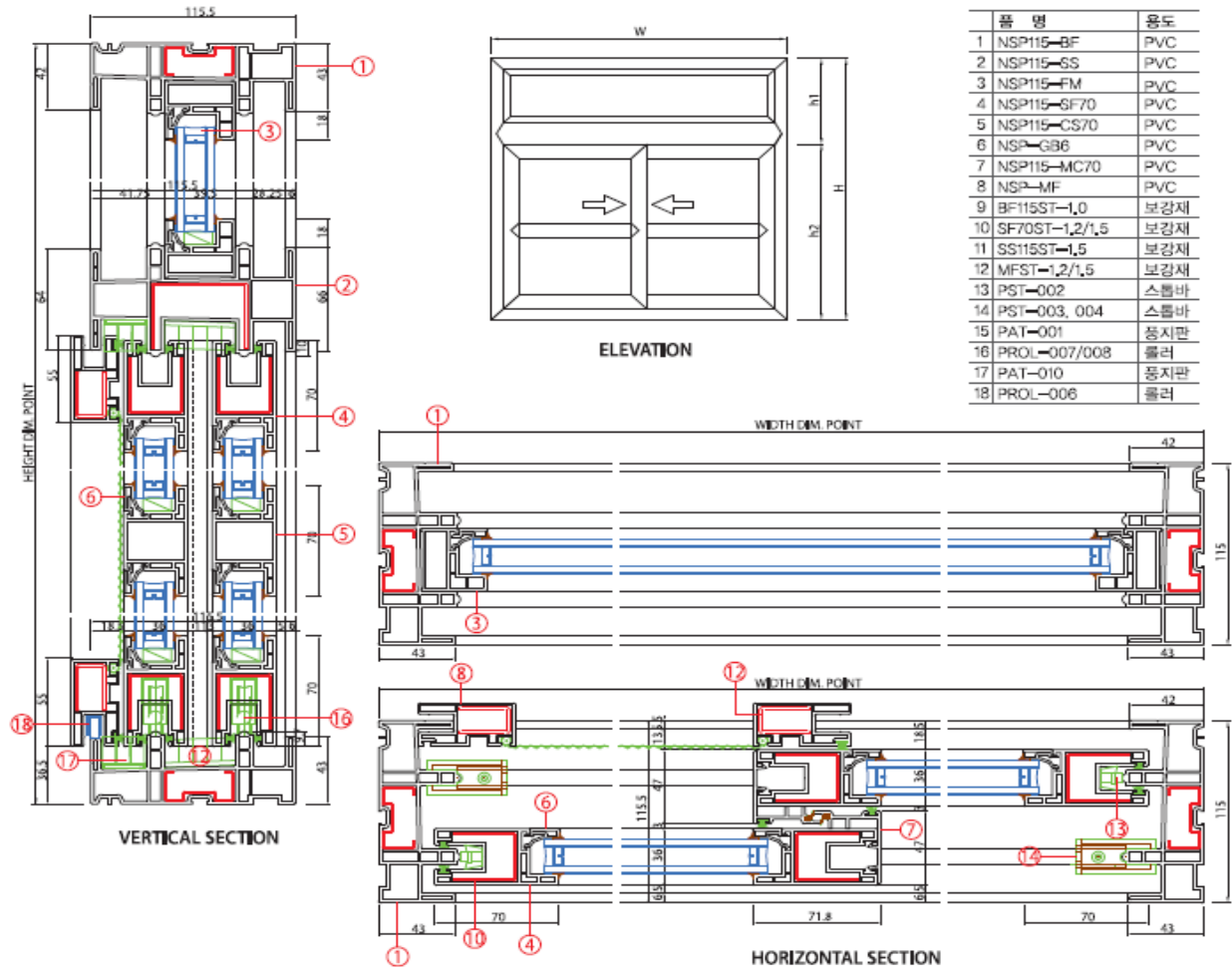
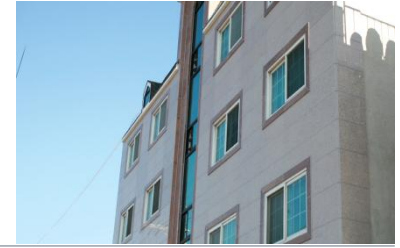




## 2. KYP115-70- SLIDING & FIX

### ▣ Sliding General Feature

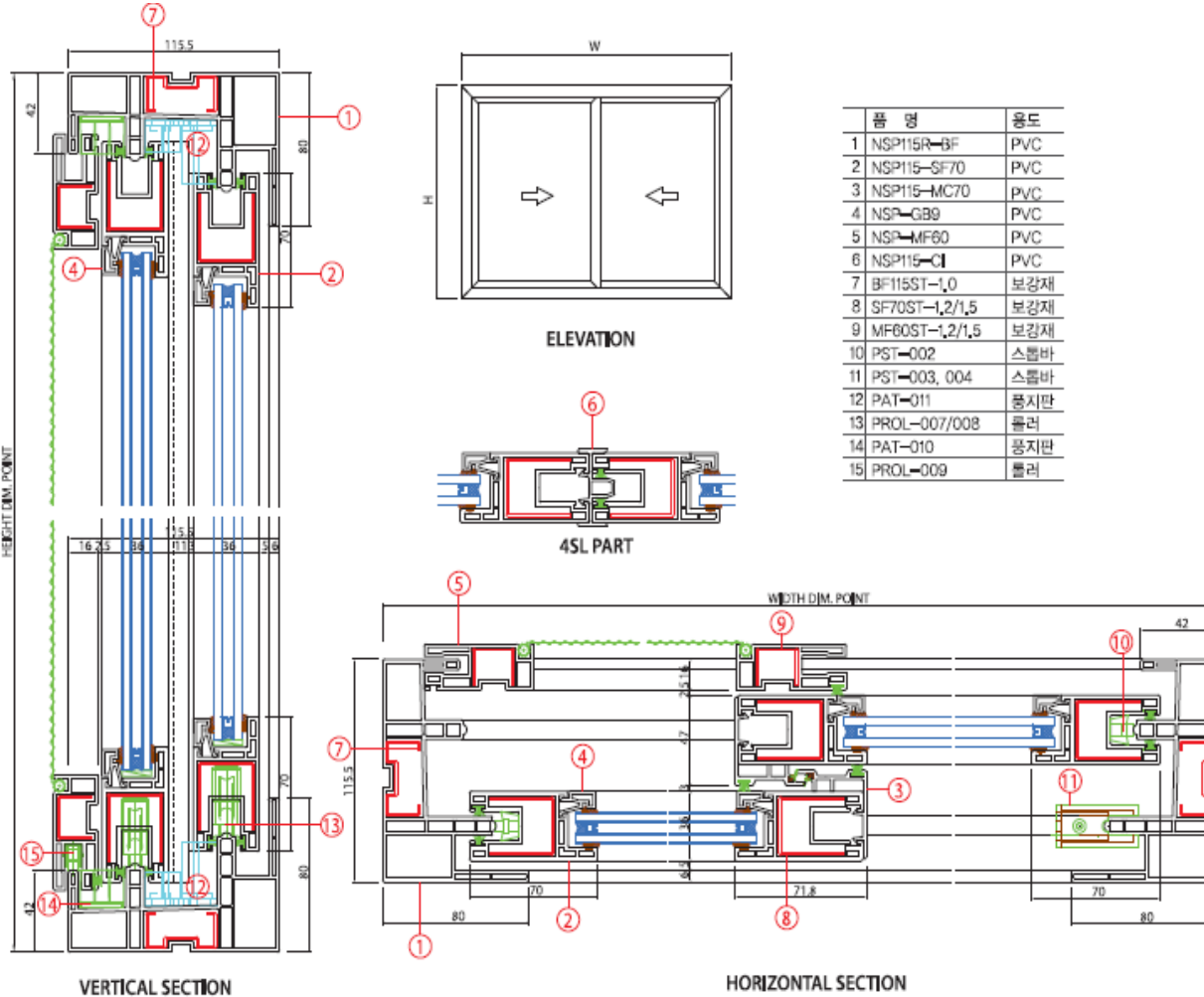
- Improved switching capacity
- Flexible operability
- Enhance the aesthetic effect



# 3. KYP115R-70- SLIDING

## Sliding General Feature

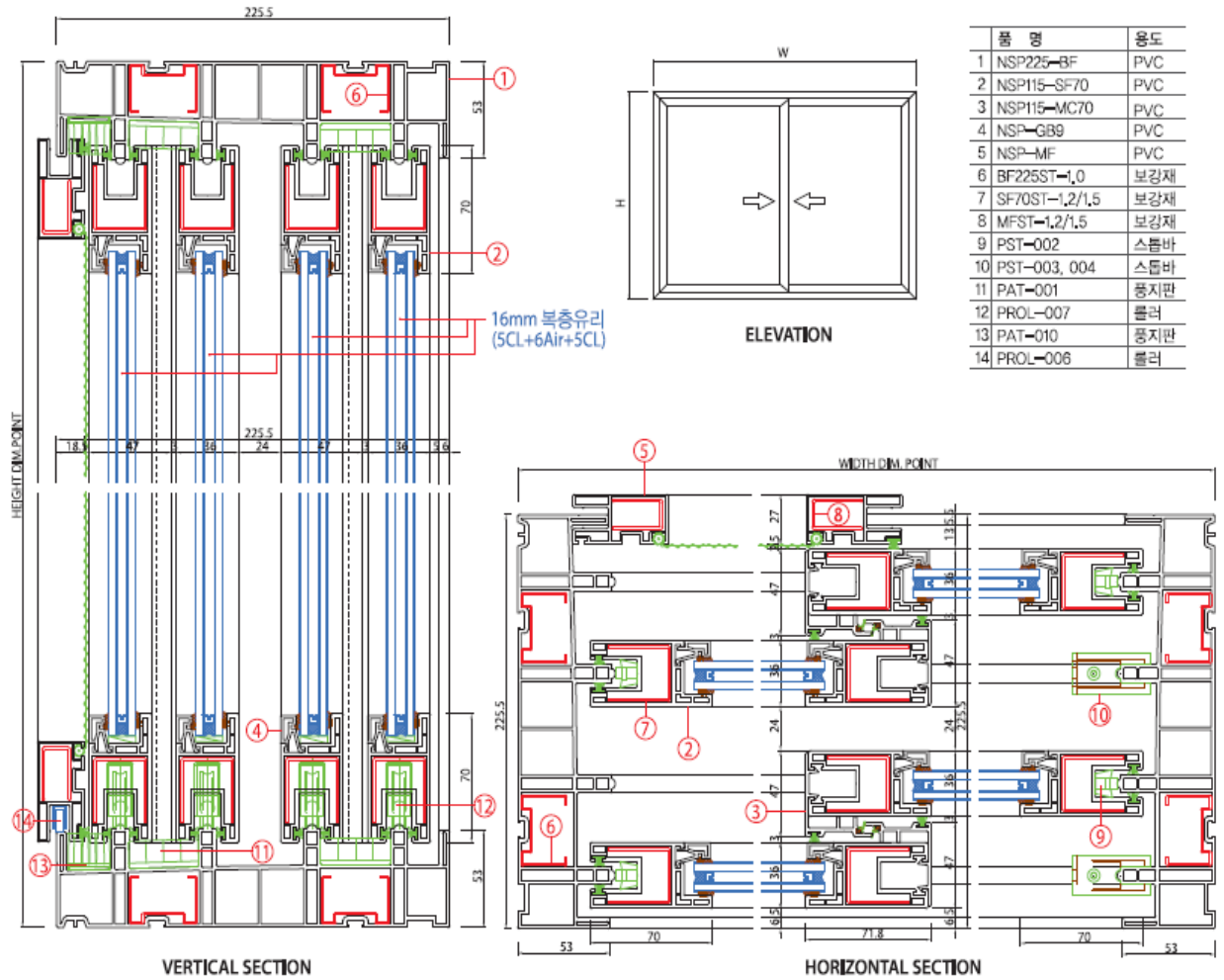
- Window for the coast
- Effectively blocking the penetration of rainwater
- High quality of wind resistance



# 4. KYP225-70- P16CA/P16CA

## ▣ Sliding Balcony Feature

- Structural stability (Double window system)
- Excellent durability (Wide product range)
- Aesthetic effect



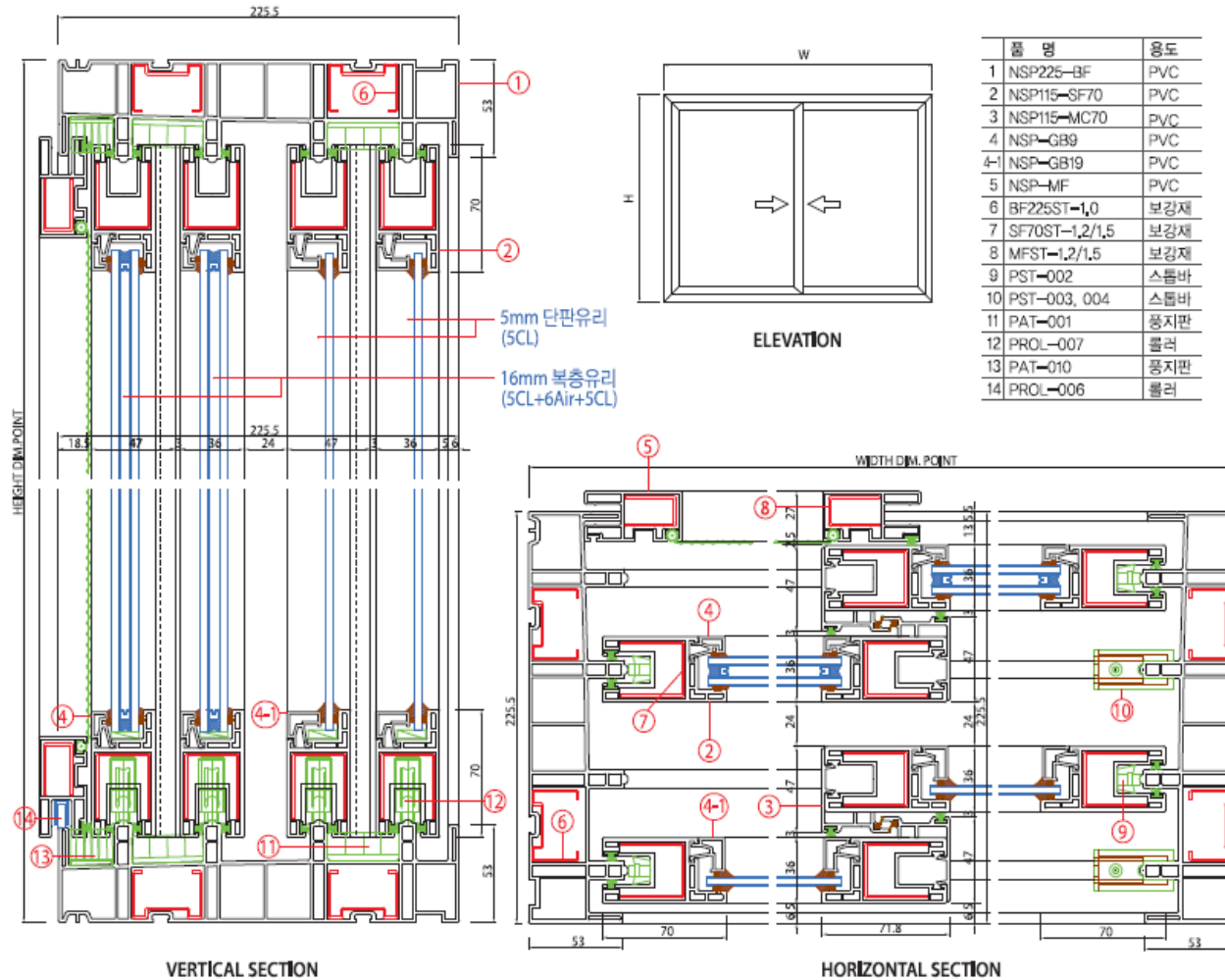
VERTICAL SECTION

HORIZONTAL SECTION

# 5. KYP225-70- P16CA/S5

## ■ Sliding Balcony Feature

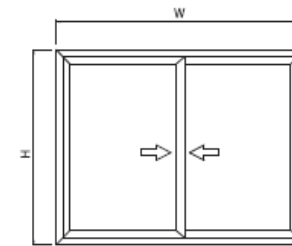
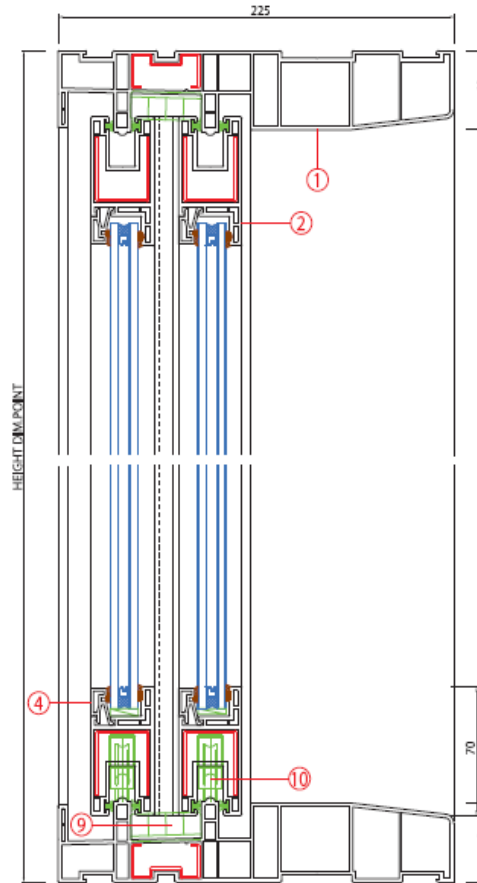
- Structural stability (Double window system)
- Excellent durability (Wide product range)
- Aesthetic effect



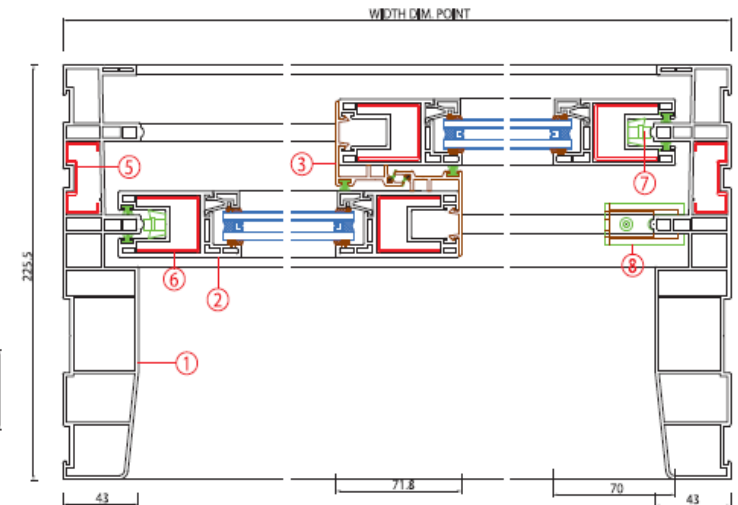
# 6. KYP-BF225W-70- SLIDING

## ▣ Sliding Balcony Feature

- Structural stability
- Excellent durability
- Aesthetic effect



품명	용도
1 NSP-BF225W	PVC
2 NSP115-SF70	PVC
3 NSP115-MC70	PVC
4 NSP-GB9	PVC
5 BF225ST-1.0	보강재
6 SF70ST-1.2/1.5	보강재
7 PST-002	스톱바
8 PST-003, 004	스톱바
9 PAT-001	풍지판
10 PROL-007	롤러

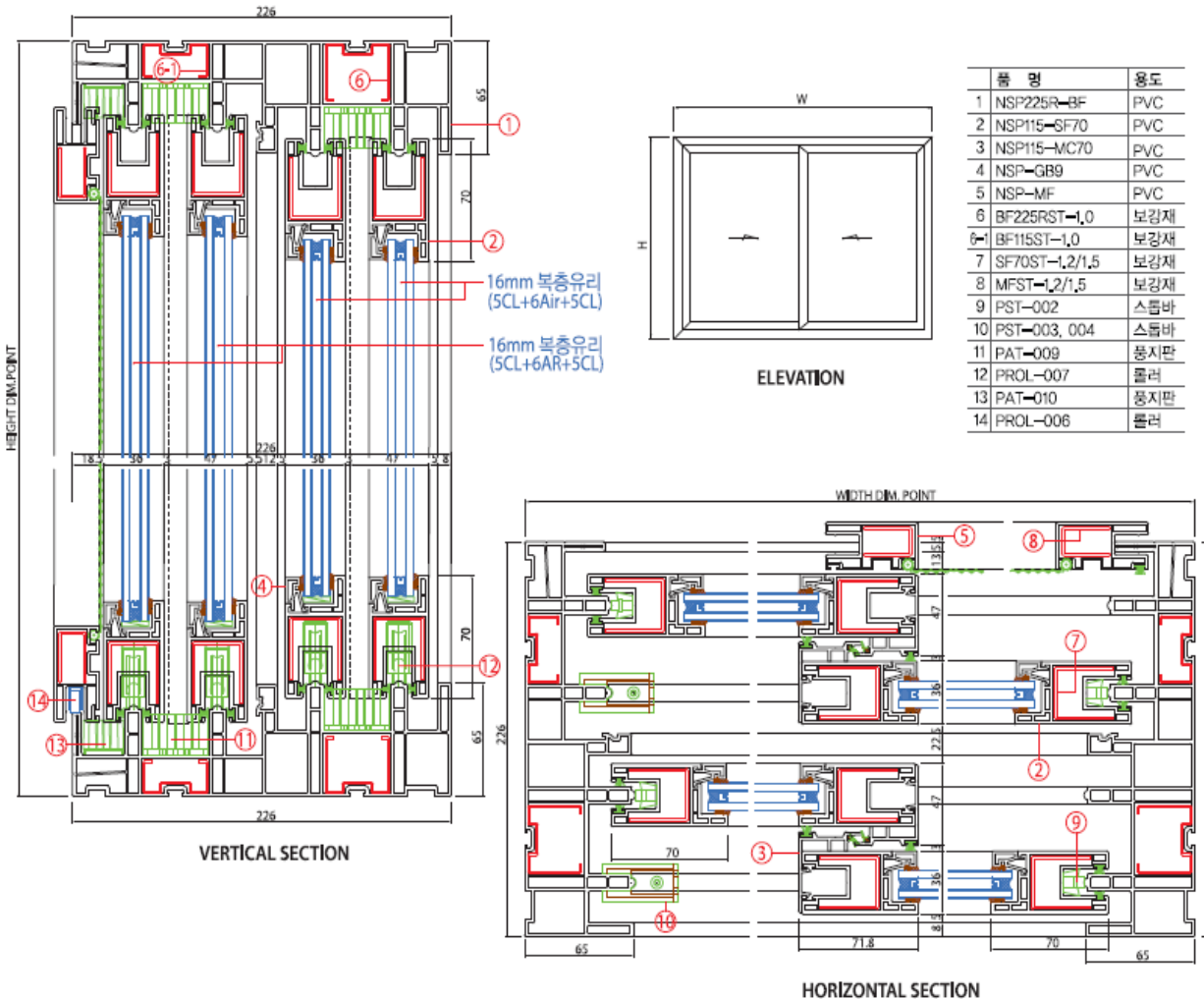


HORIZONTAL SECTION

# 7. KYP225R-70-P16CR/P16CA

## ▣ Sliding Balcony Feature

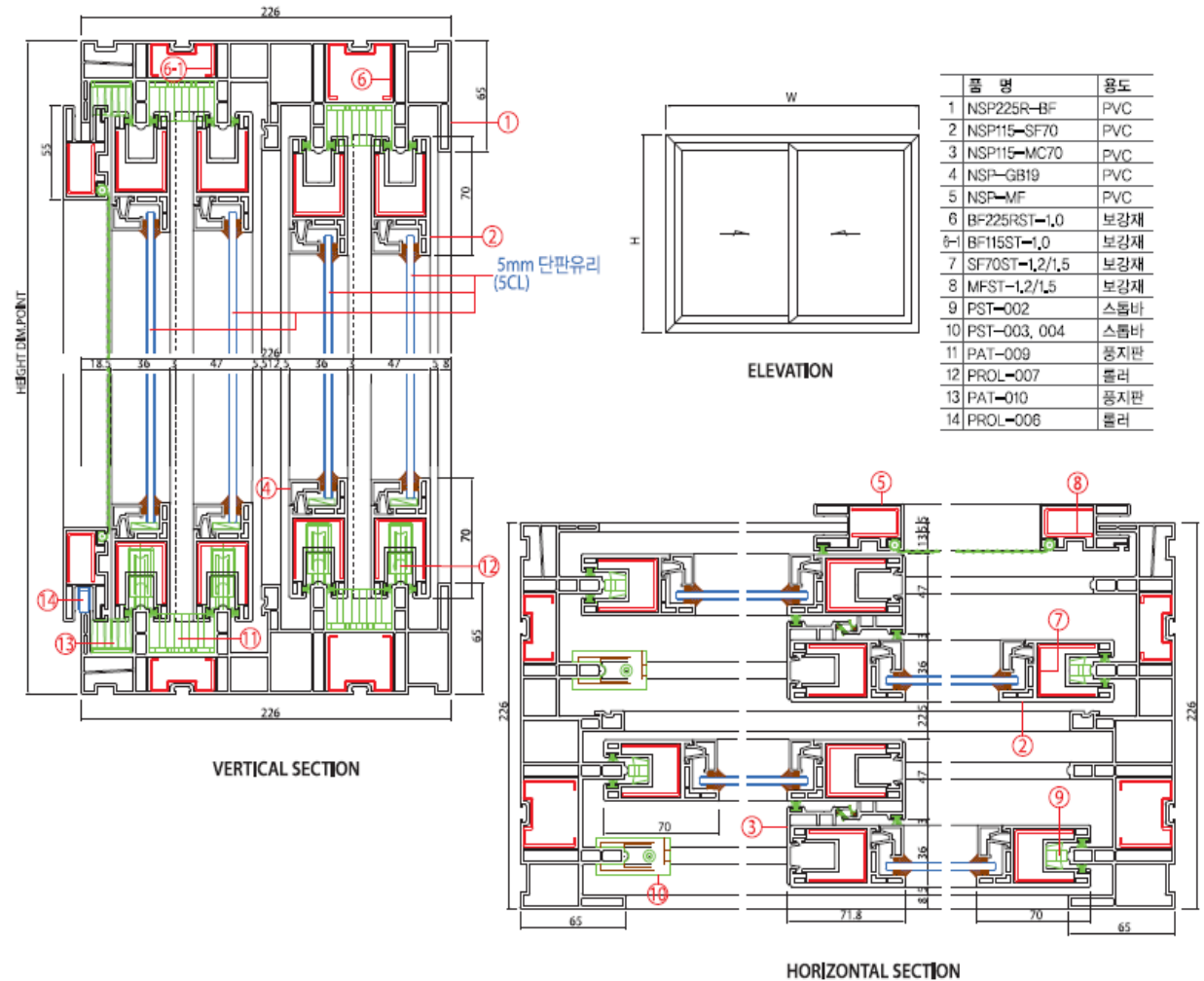
- Structural stability
- Excellent durability
- Aesthetic effect



# 8. KYP225R-70-S5/S5

## ▣ Sliding Balcony Feature

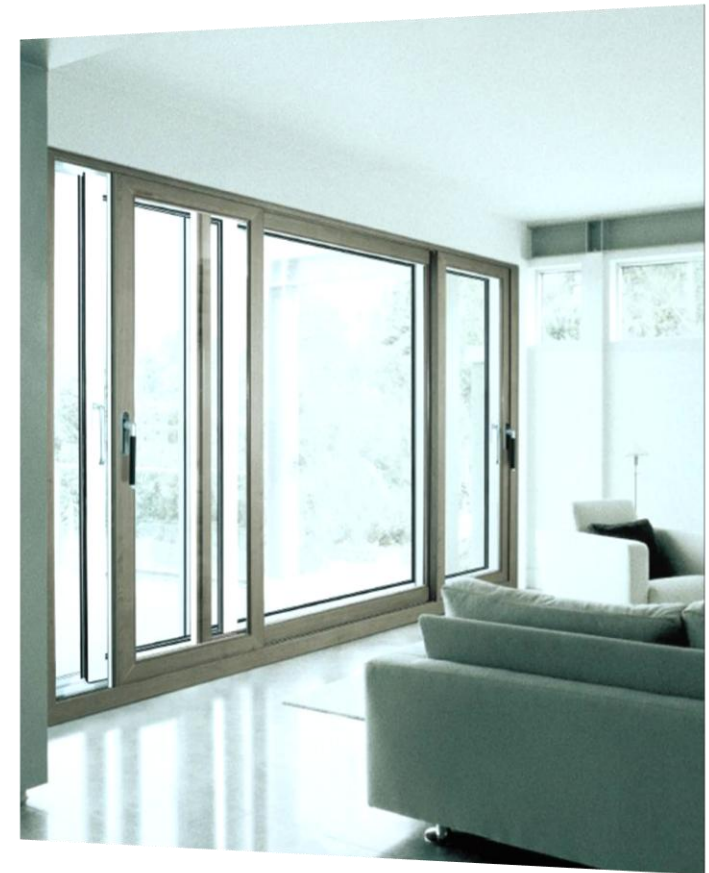
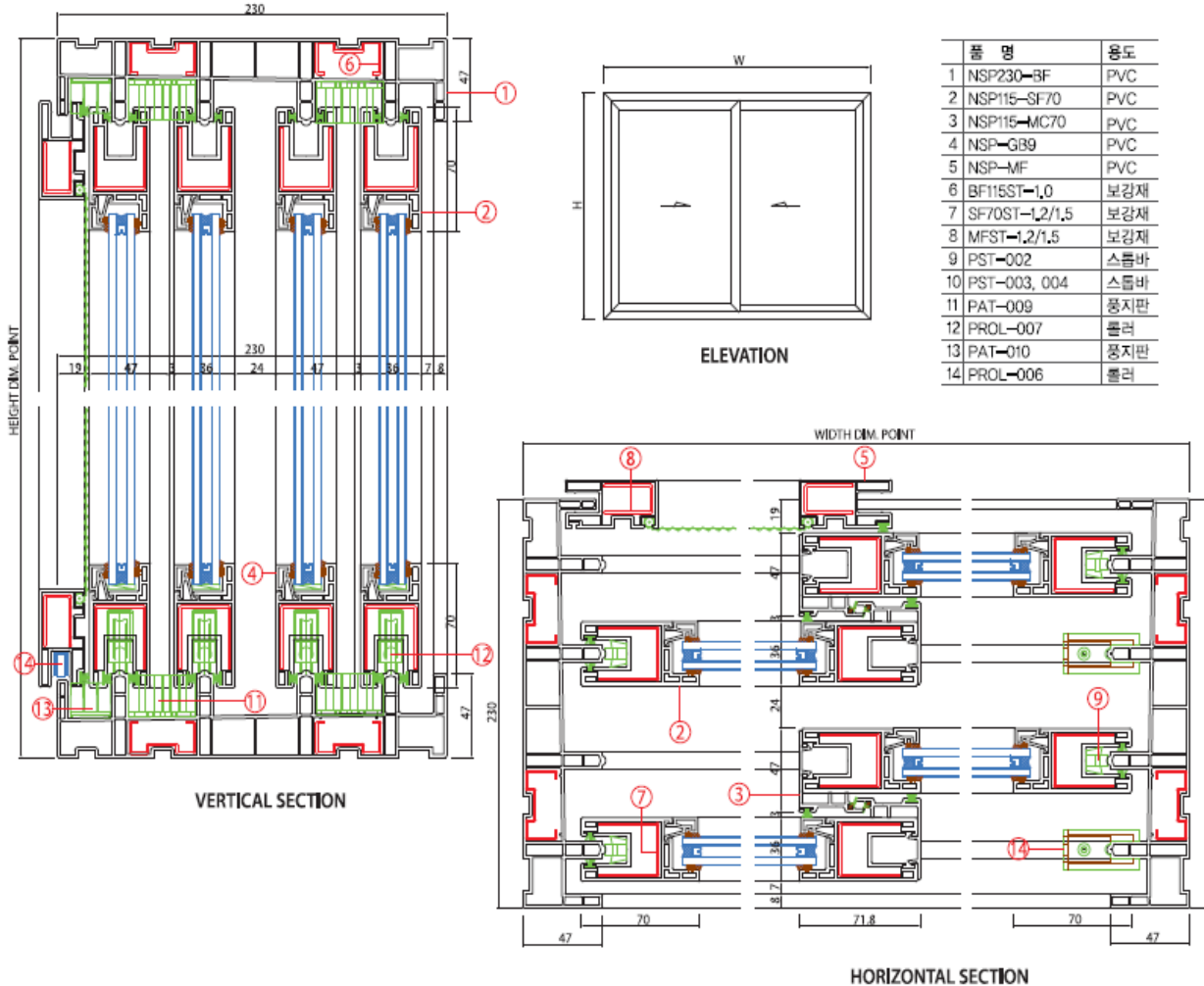
- Structural stability
- Excellent durability
- High quality of wind resistance



# 9. KYP230-70-SLIDING

## ▣ Sliding Balcony Feature

- Structural stability
- Excellent durability

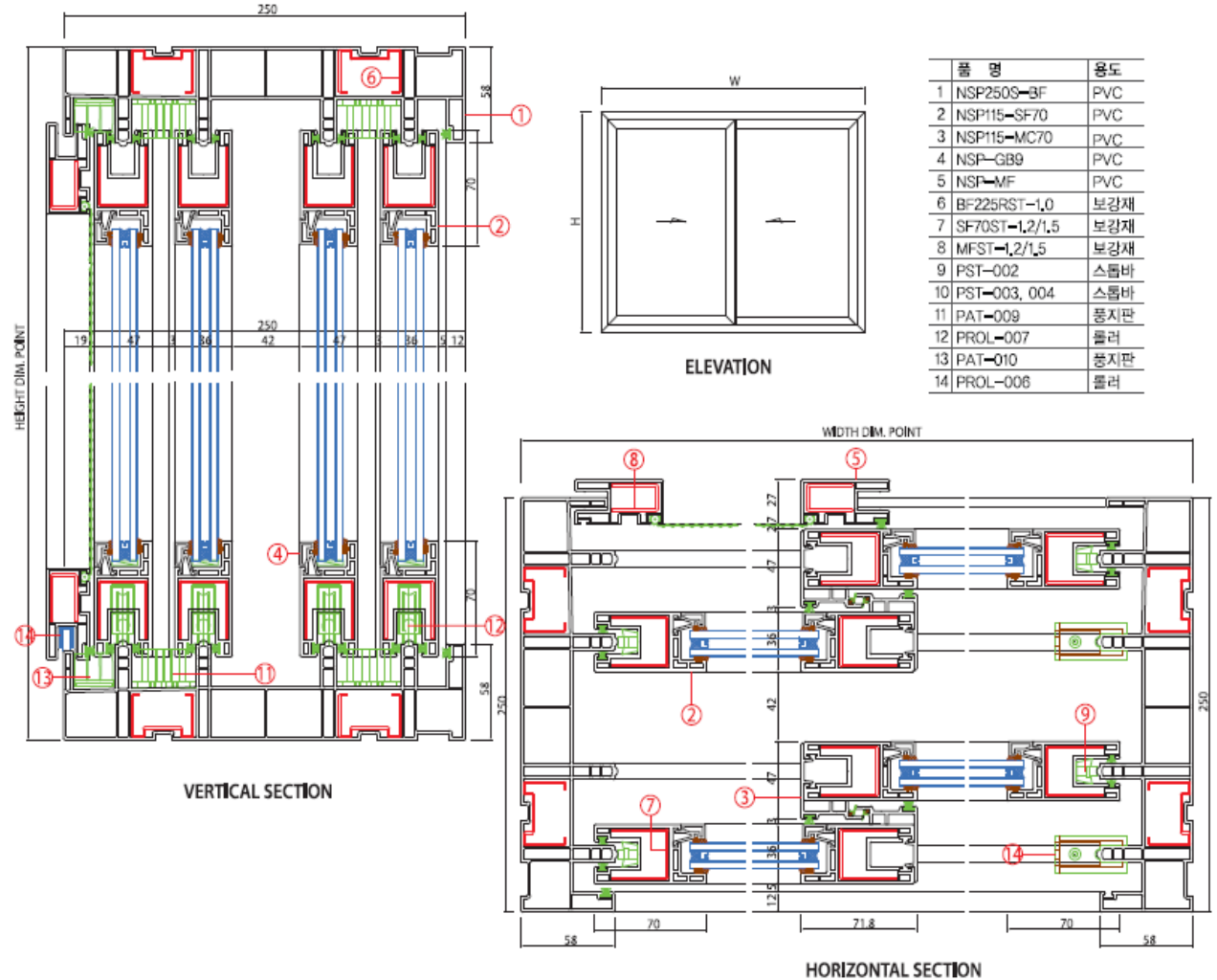




# 10. KYP250s-70-SLIDING

## ▣ Sliding Balcony Feature

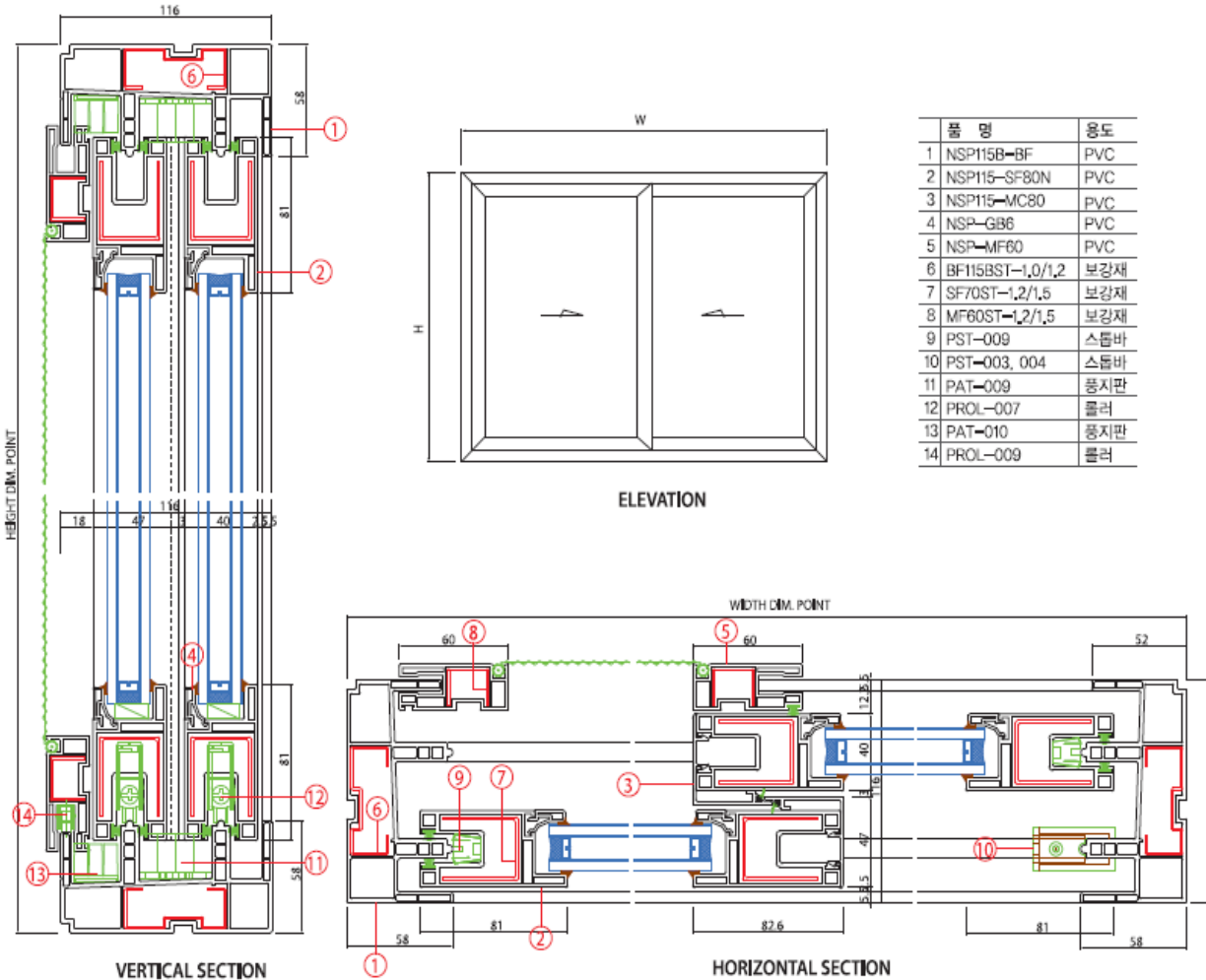
- Structural stability
- Excellent durability



# 11. KYP115B-80-SLIDING

## ▣ Sliding Balcony Feature

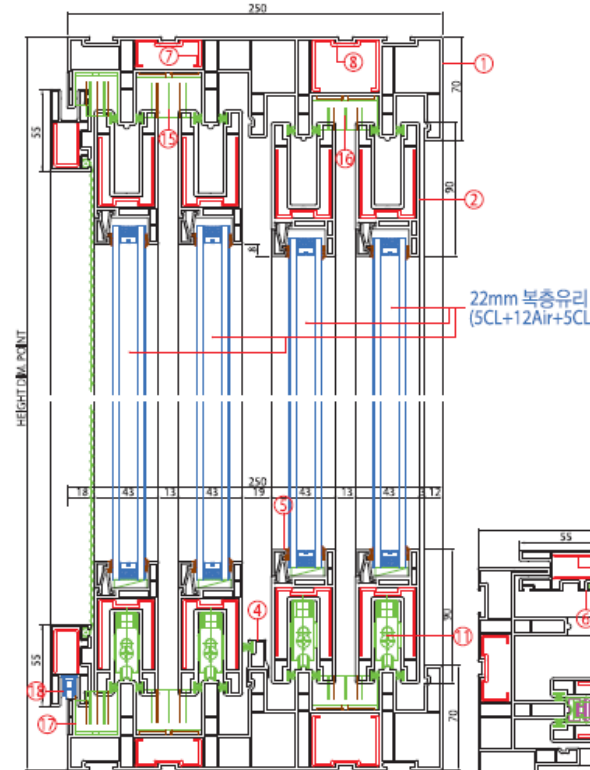
- Structural stability
- Excellent durability



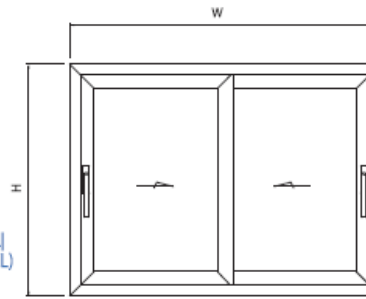
# 12. KYP250-P22CA/P22CA

## ▣ Sliding Balcony Feature

- Structural stability
- Excellent durability

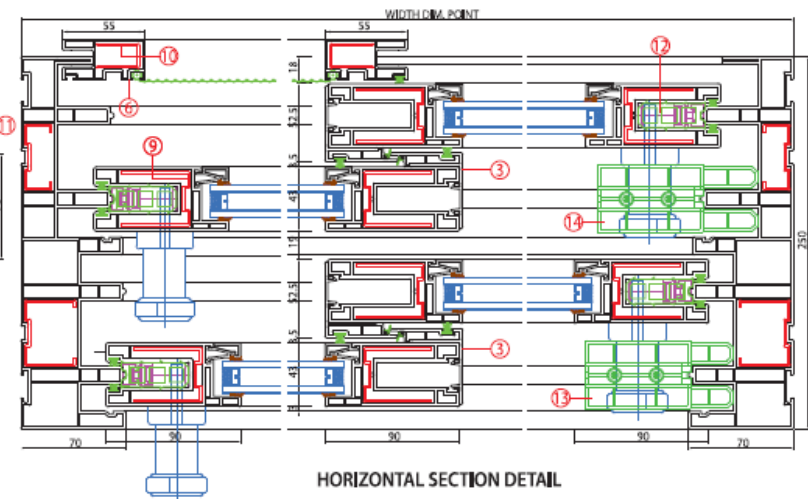


VERTICAL SECTION DETAIL



ELEVATION

품명	용도
1 NSP250-BF	PVC
2 NSP250-SF90	PVC
3 NSP250-MC90	PVC
4 NSP-WC20	PVC
5 NSP-GB18	PVC
6 NSP-MF	PVC
7 BF250ST-1,5	보강재
8 BF250ST-1,5-1	보강재
9 SF90ST-1,5, 2,0	보강재
10 MFST-1,2, 1,5	보강재
11 PROL-004, 005	roller
12 PGA-003-1	stop bar
13 PST-007	stop bar
14 PST-008	stop bar
15 PAT-004	finger plate
16 PAT-005	finger plate
17 PAT-007	finger plate
18 PROL-006	roller

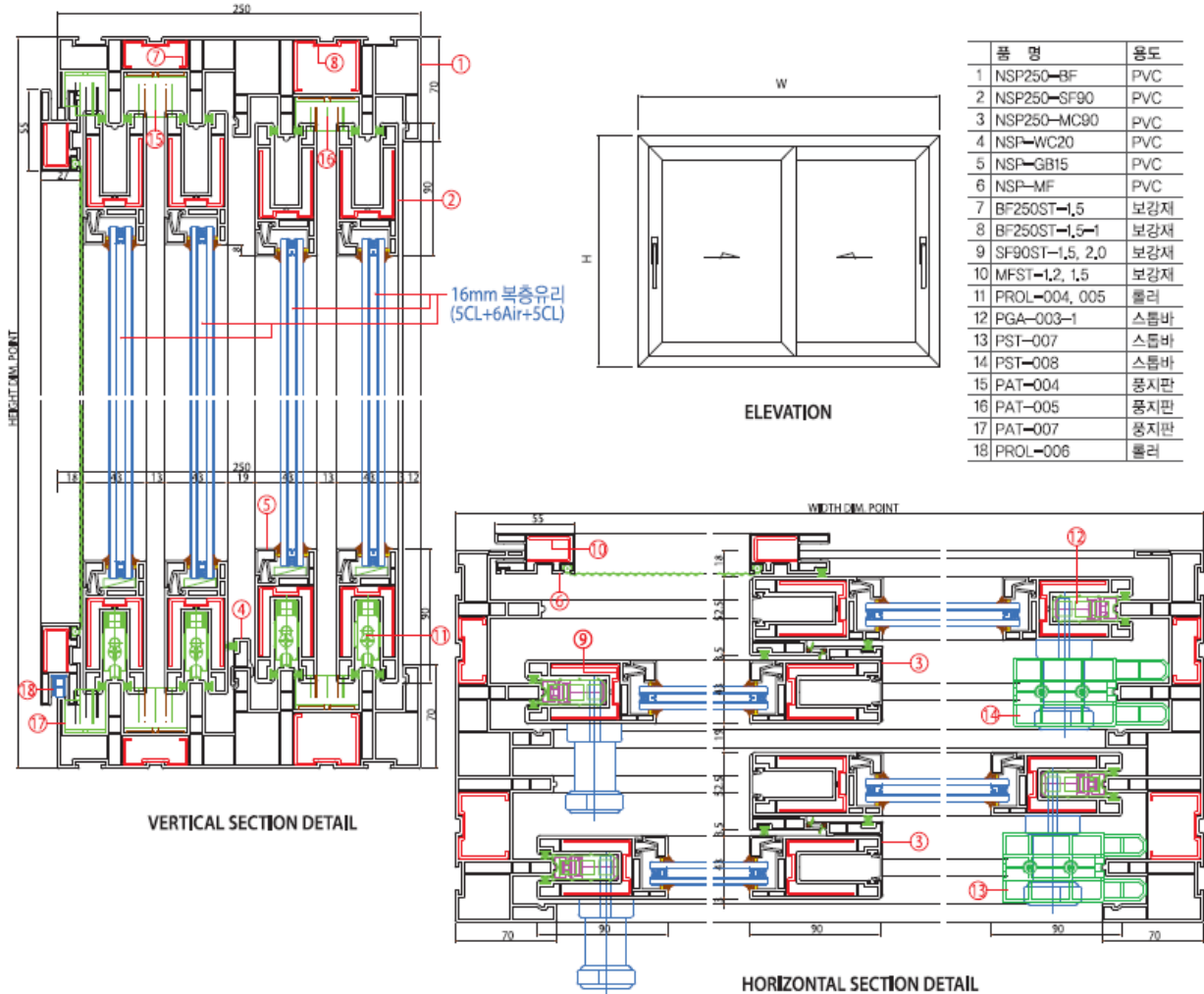


HORIZONTAL SECTION DETAIL

# 13. KYP250-P16CA/P16CA

## ▣ Sliding Balcony Feature

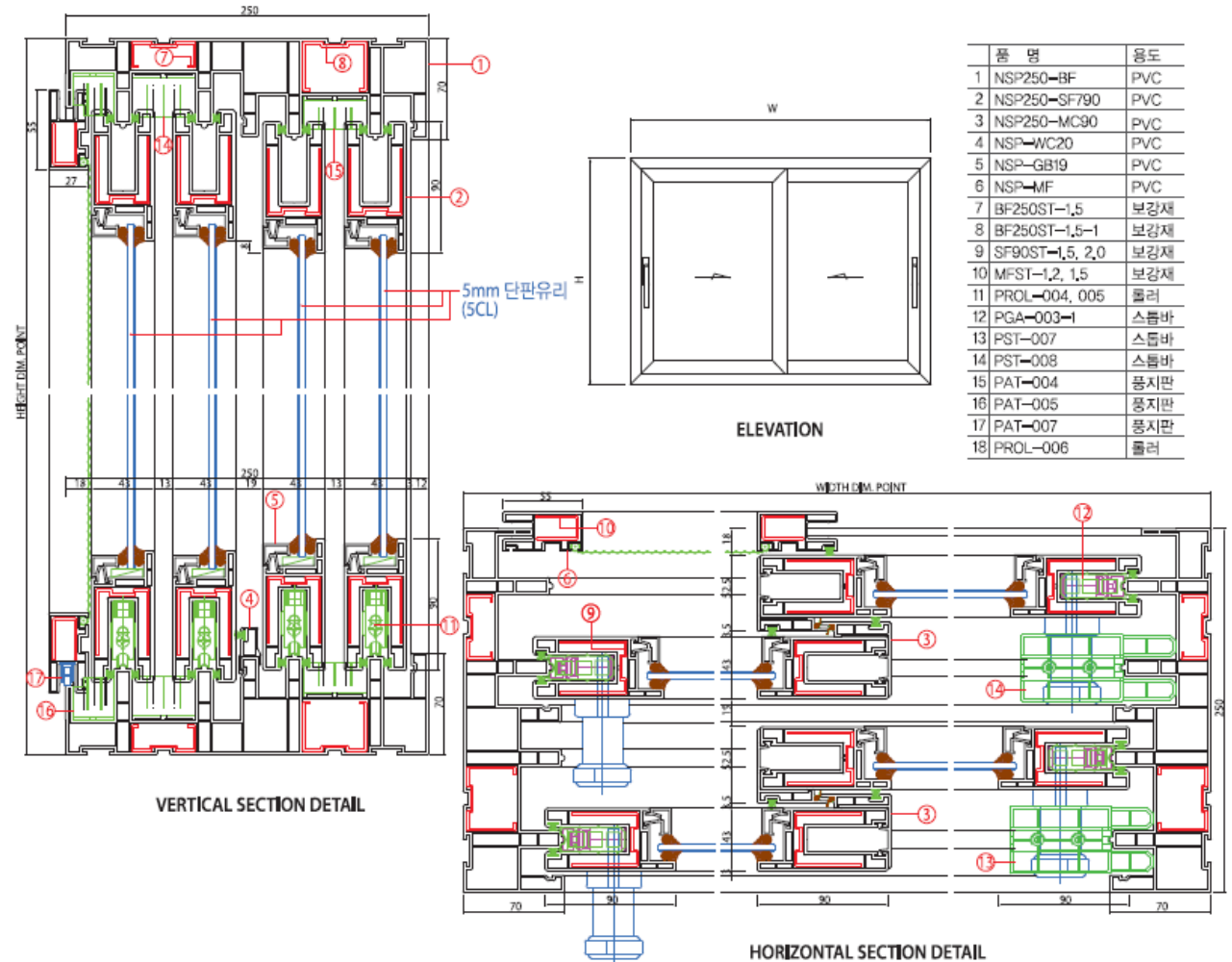
- Structural stability
- Excellent durability



# 14. KYP250-S5/S5

## ▣ Sliding Balcony Feature

- Structural stability
- Excellent durability



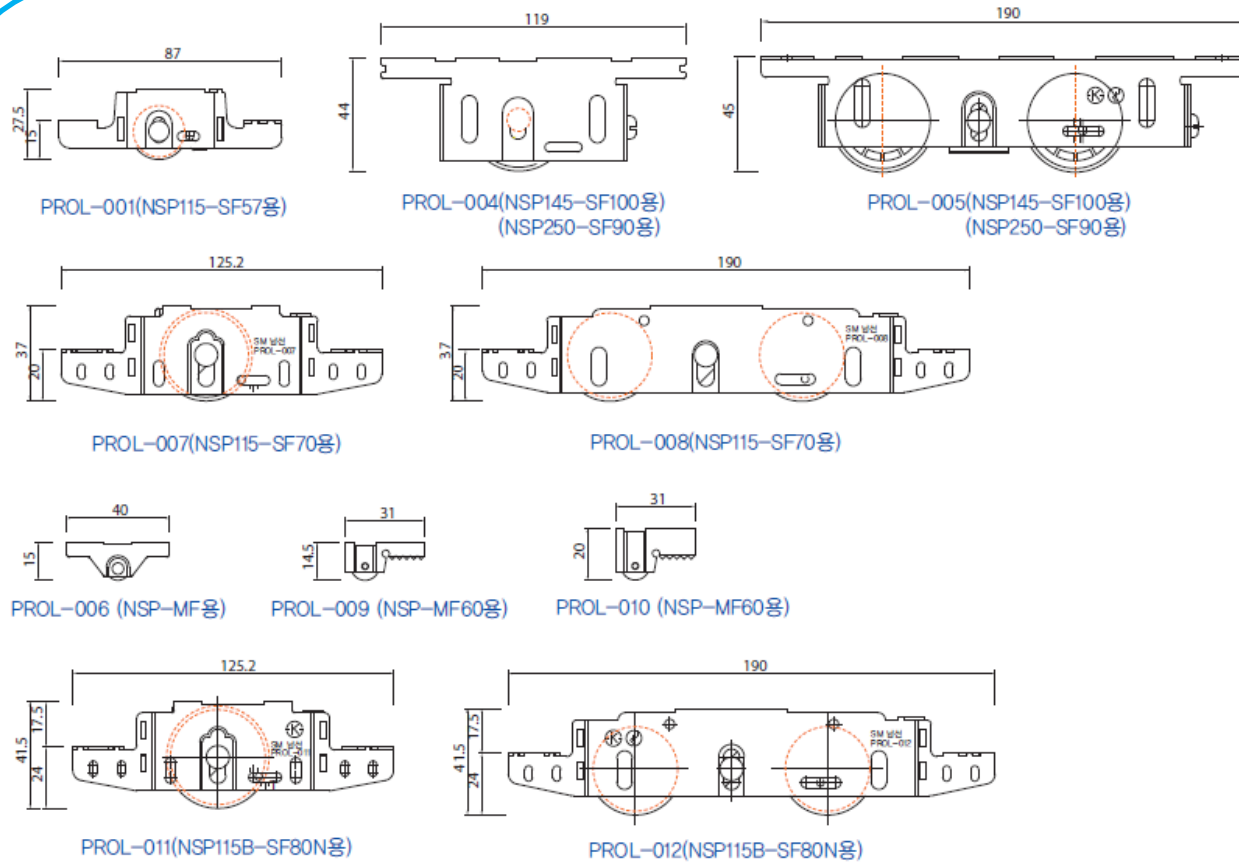
# 15. KY-Roller and Stopper

## ▣ Sliding Balcony Feature

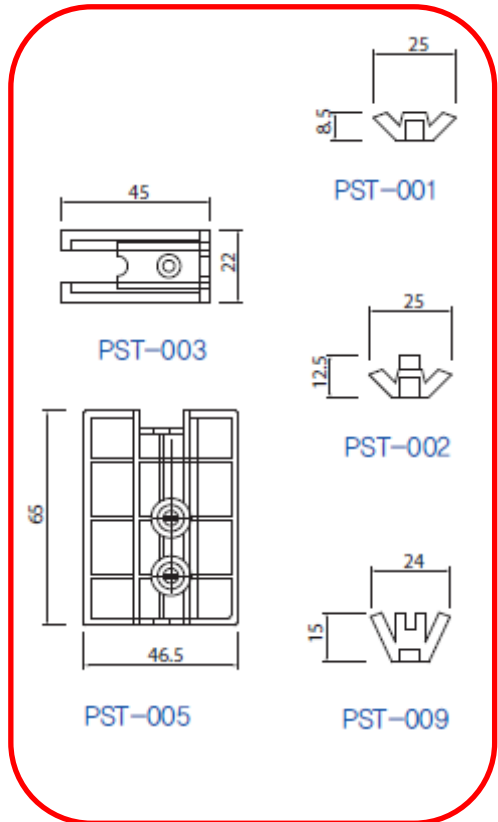
- Structural stability
- Excellent durability



### Roller



### Stopper



# 6. PVC DOOR

## Contents

### 01. Extruded Foamed Door Frame

1.1 Integrated door frame

1.2 Gasket Integrated door frame

1.3 Removable stoppers and door frames

### 02. ABS(PVC) Door

2.1 KUMYOUNG ABS Door

2.2 Horizontal Sliding Door

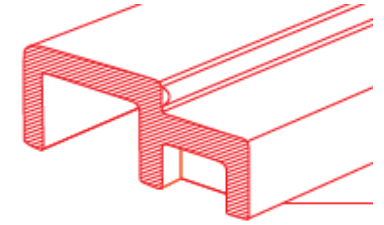
2.3 Linking Triple Door



# 1. Extruded Foamed Door Frame

## ■ Integrated door frame

- Special PVC foam frame
- Resistant to moisture and Excellent work ability
- Eco-friendly



110 mm



130 mm



145 mm



155 mm



175 mm



195 mm



210 mm



230 mm



245 mm

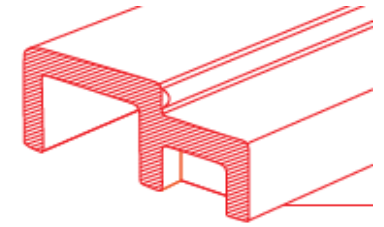




# 1. Extruded Foamed Door Frame

## ■ Gasket Integrated door frame

- Airtightness, high energy efficiency, soundproofing
- Resistant to moisture and Excellent work ability
- Eco-friendly



110 mm



130 mm



140 mm



155 mm



175 mm



195 mm



210 mm



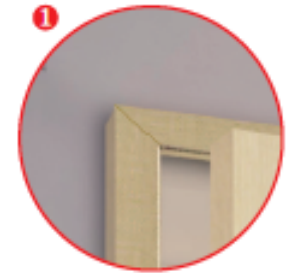
230 mm



Gasket



Gasket Door Frame set



The minimum gap

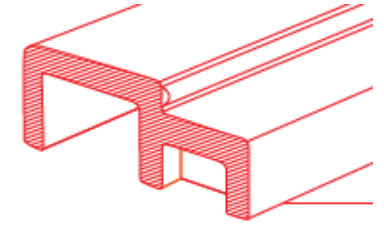


1. When the door is closed reduce noise.
2. Insulation
3. Soundproofing

# 1. Extruded Foamed Door Frame

## ■ Removable stoppers and door frames

- Convenient construction
- Resistant to moisture and Excellent work ability
- Eco-friendly



135 mm



155 mm



175 mm



195 mm



210 mm



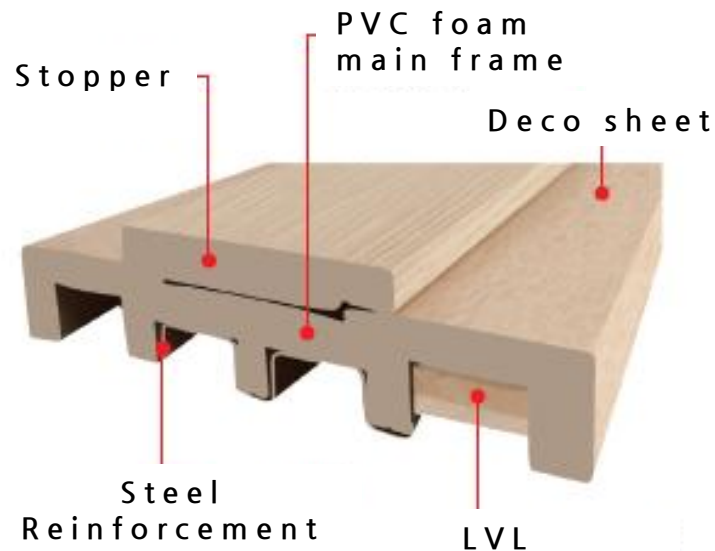
225 mm



240 mm



250 mm



- \* Basic construction and knife block construction is possible
- \* The stopper can change shape depending on Construction Site
- \* Bidirectional or unidirectional be constructed
- \* Possible changes stopper, depending on door's thickness

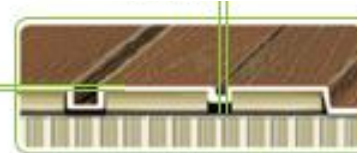
## 2. ABS(PVC) Door

### ■ KUMYOUNG ABS Door

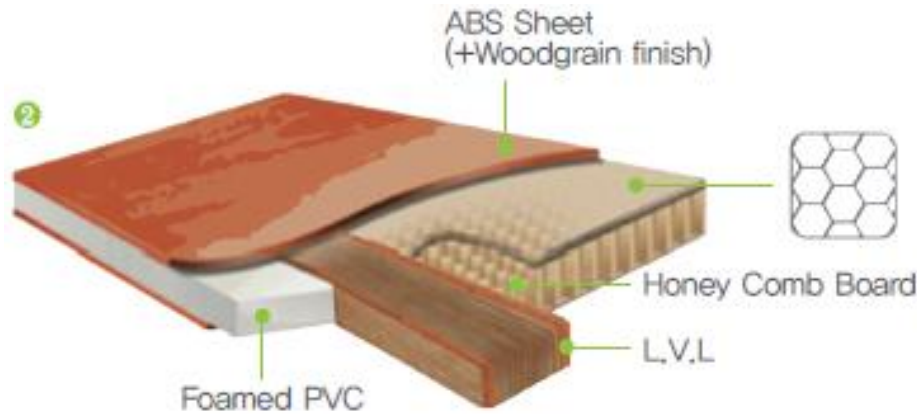
- Various designs, wide Deco Sheet Options
- Using Honey-comb filling the board to reduce the weight
- Using advanced design wood pattern deco sheet



Width: 1mm



Depth:  
1mm



- \* Easy processing PVC foam core
- \* Honey-comb filled with insulation and Excellent sound insulation
- \* Wood LVL use to prevent warping and bending

## 2. ABS(PVC) Door

### ■ KUMYOUNG ABS door

- Various designs, wide Deco Sheet Options
- Using Honey-comb filling the board to reduce the weight
- Using advanced design wood pattern deco sheet



KYD-01



KYD-02



KYD-03



KYD-04



KYD-05

## 2. ABS(PVC) Door

### ▣ Horizontal Sliding Door

- Various designs, wide Deco Sheet Options
- Resistant to moisture and Excellent work ability
- Using advanced design wood pattern deco sheet



Basic-1



Basic-2



Basic-3



Basic-4

## 2. ABS(PVC) Door

### ■ Linking Triple Door

- Various designs, wide Deco Sheet Options
- Resistant to moisture and Excellent work ability
- Using advanced design wood pattern deco sheet



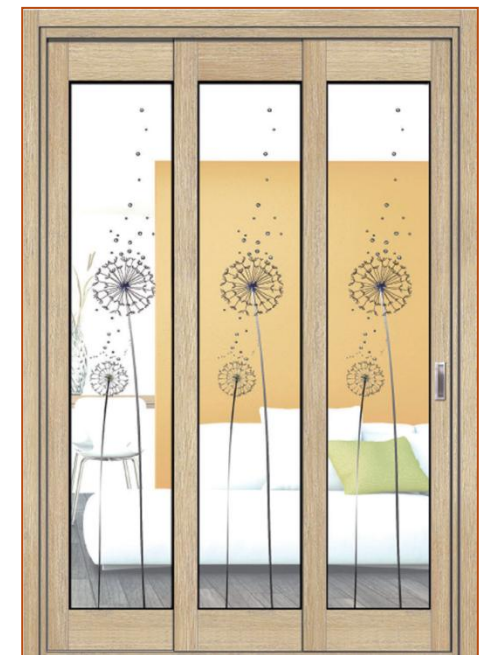
Spring



Paradise



Hollyhock



Symphony

# 6. Notice and Certificates

## Contents

### 01. Notice

#### 1.1 Construction & Handling Notice

### 02. Certificates

#### 2.1 KS (Korean Industrial Standards)

#### 2.2 ISO 9001, 14001



# 1. Notice

## Construction & Handling Notice

- Note security
- Handle with care
- Full knowledge



Flammables



Caution be stabbed



Avoid direct sunlight



Avoid high temperature



Avoid outdoor



Avoid structure change



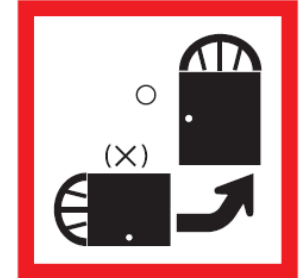
Remove Protecting Film



Avoid Hanging, impact



Caution Using hammer



keep stand on product